

INCIDENT ALERT

LOCATION: Quarry

ALERT STATUS: Normal

ACTIVITY: Production and Processing

DATE ISSUED: 28/07/06

SUB ACTIVITY: Face activity

INCIDENT No: 00111

TITLE

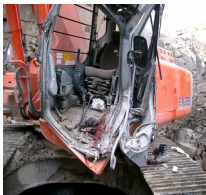
Rock fall from face onto hydraulic breaker

ACCIDENT / INCIDENT DETAILS

A sub-contractor received serious injuries to his left leg, resulting in it having to be amputated below the knee.

The injury was sustained when a massive slab of rock fell from the quarry face and badly damaged the cab of his hydraulic breaker.

ACCIDENT / INCIDENT IMAGES



LEARNING POINTS / ACTIONS TAKEN

All relevant quarry based personnel will be invited to a briefing during January/February 2005, which will provide full details on the incident.

LEARNING POINTS / ACTIONS IMAGES