

Leading edge working and fall arrest

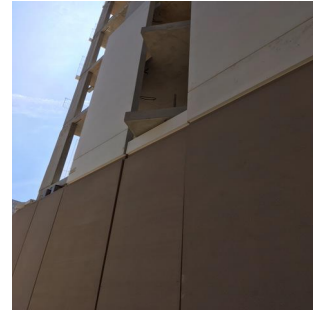
WHAT HAPPENED

An operator was working on a leading edge at Level 01 drilling remedial holes in the RC slab edge. The operative left the exclusion zone to retrieve dust suppression equipment. When he returned, he failed to clip back on to the anchor point before resuming work.

By failing to clip back on the operator exposed himself to the risk of a serious fall. The two images show the the area he was working on from the inside and outside.



Internal view



External view

LEARNING POINTS / ACTIONS TAKEN

- Toolbox talk provided to all operatives working on site in relation to working at height and the correct use of fall arrest equipment.
- 'STOP' campaign training provided to all operatives by principal contractor.
- Operatives to work in pairs 'buddy system' when working at height or carrying out high risk activities.
- Work at height permit system introduced.

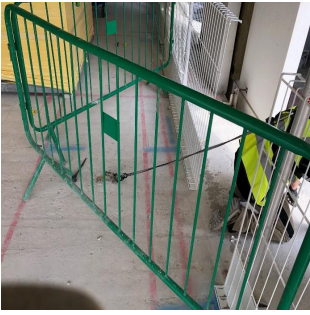


Image of operator clipped on



LOCATION:
ACTIVITY:
SUB ACTIVITY:

CONSTRUCTION/DELIVERY SITE

ALERT STATUS: Normal
DATE ISSUED: 07/04/2020 13:06:17
INCIDENT No: 02556