

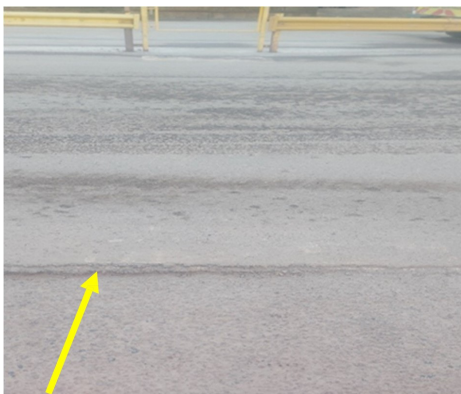
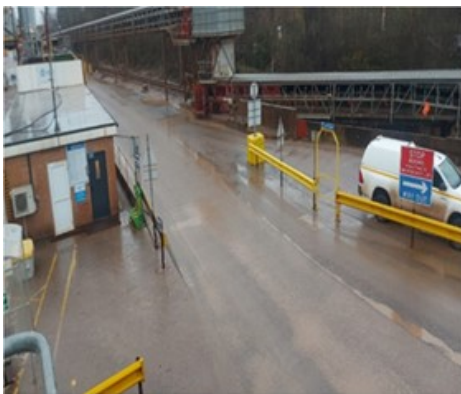
# Slips, trips and falls –Individual sustains sprained wrist, cuts and grazes following a trip on pedestrian walkway

## WHAT HAPPENED

The IP was walking across the designated pedestrian walkway to the vehicle 'pull up' point outside the weighbridge to conduct inspection and inductions. The IP tripped on a slightly raised section of asphalt and fell forwards, in doing so they tried to break their fall by putting their hands out resulting in a sprained wrist, cuts and grazes to their hand, knees, and head.

### Key Factors:

- IP had not been inducted to site
- IP did not have a risk assessment for the task
- The raised level is historic and caused by an additional layer of asphalt added to the road



## LEARNING POINTS / ACTIONS TAKEN

- Area to be levelled to remove the raised level
- Complete Hazard Identification Risk Assessment for task
- Review induction process on multi-unit sites
- Review pedestrian crossing to ensure direct crossing via additional designated gate

---

LOCATION:	QUARRY	ALERT STATUS:	Normal
ACTIVITY:	PEDESTRIAN SAFETY	DATE ISSUED:	30/07/2023 20:36:00
SUB ACTIVITY:	NO SUB ACTIVITY AVAILABLE	INCIDENT No:	03655