

Fatal 5 - Dump truck hits van in incident that could have been fatal.

WHAT HAPPENED

Potential Fatal Incident (PFI) - Ongoing investigation

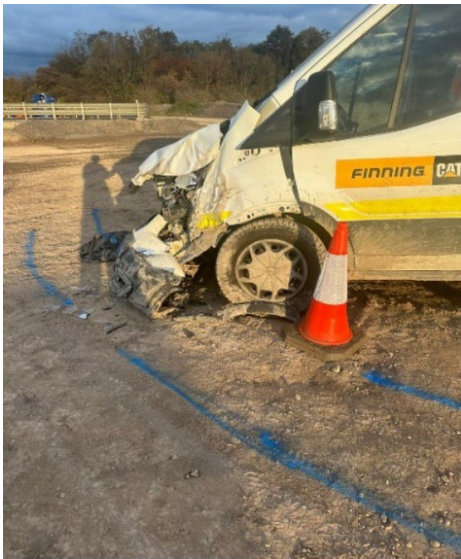
A potentially fatal incident occurred recently at a quarry within a mobile plant compound.

A Finning's engineer was working on a CAT 777, carrying out a maintenance task. The machine had been de-isolated so the fitter could test whether it was ready to be put back into service. When the operator returned to the machine, they performed their walkaround and pre-start inspection.

The engineer then returned to their van, which was parked approximately 1.5 to 2 meters from the dumper's blind side.

The operator then pulled forward, sharply turning right at the same time to avoid a front-end loader (FEL) which was stationary 15 meters ahead. In doing so, the back wheel made contact with the front passenger side of the engineer's van. The operator was unaware of the collision and continued to the extraction area before being called back via radio.

The engineer was sat in the driver's seat of the van and did not sustain any injuries.



LEARNING POINTS / ACTIONS TAKEN

This incident is still under investigation but it reinforces the importance of measures that help to warn drivers of the proximity of other vehicles and other measures that help to mitigate the risk of collisions.

LOCATION: QUARRY
ACTIVITY: MOBILE PLANT OPERATION AND MAINTENANCE
SUB ACTIVITY: NO SUB ACTIVITY AVAILABLE

ALERT STATUS: Normal
DATE ISSUED: 20/11/2025 11:30:15
INCIDENT No: 04947