

# State of the Industry – Basic Stat's.

Patrick J. Griffin

(Senior Inspector Mines & Quarries).

Policy & Technical





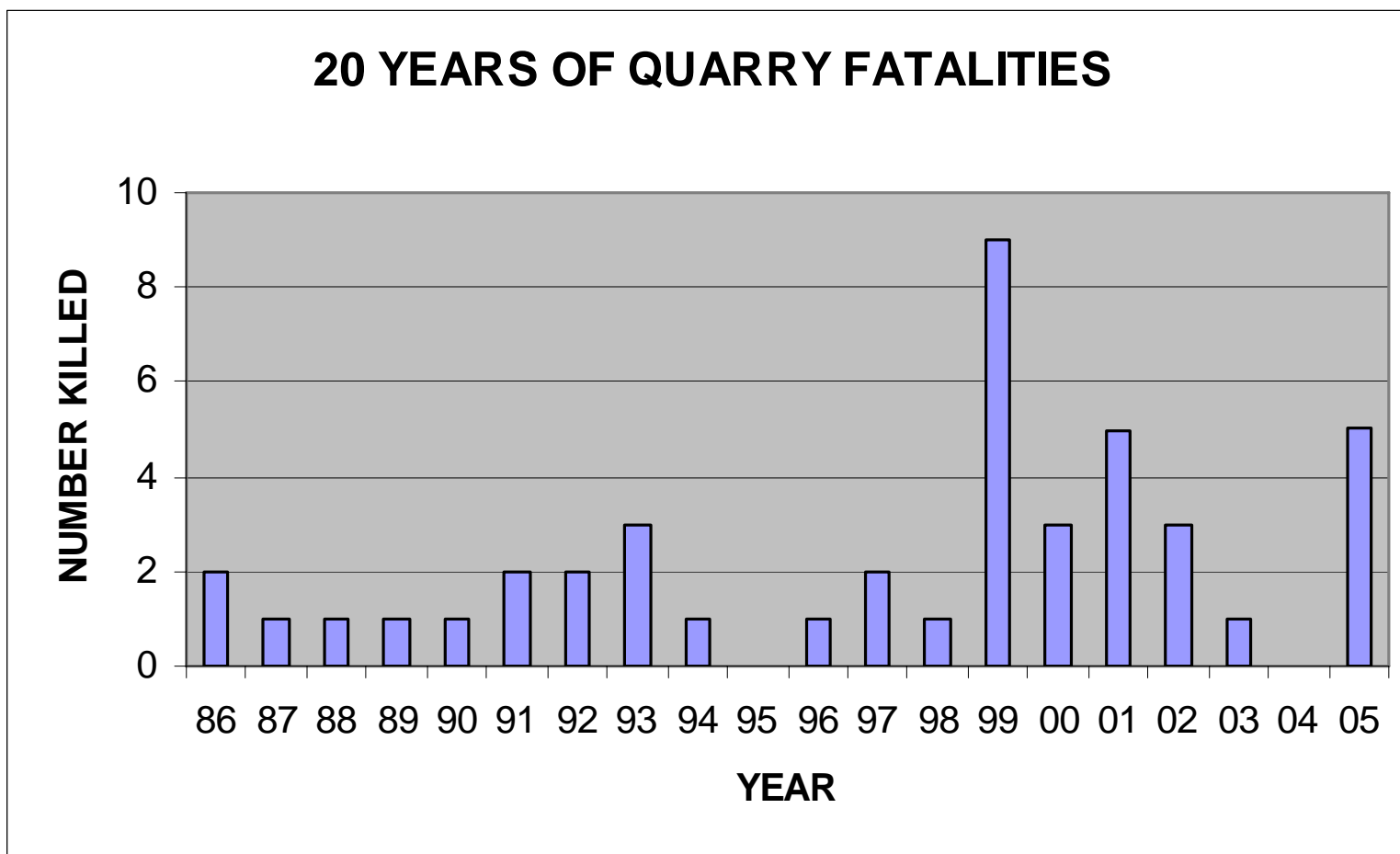
# Quarrying Industry

## □ Surface Operations

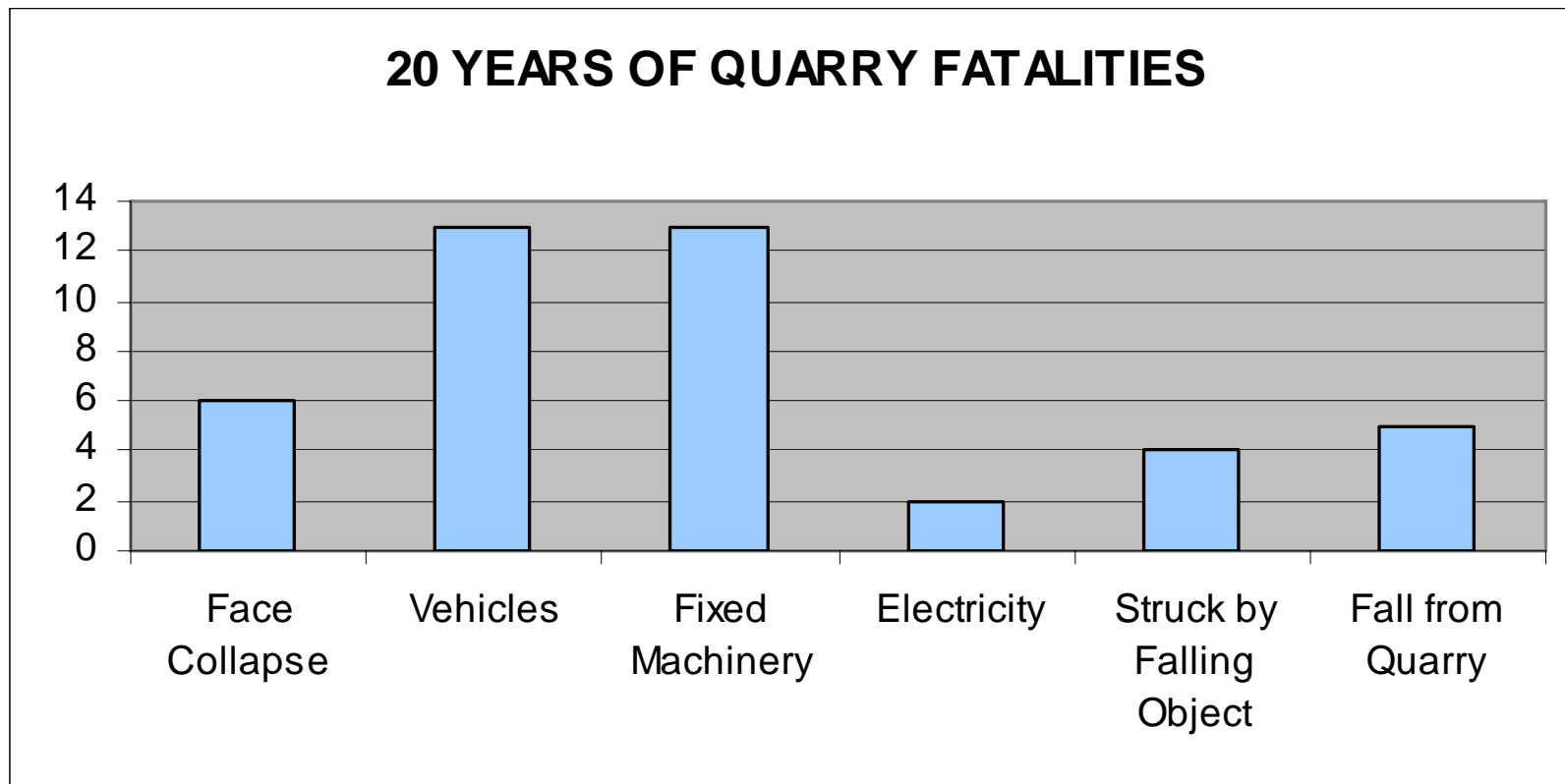
- 1500 Registered Quarries
- 500 - 550 Active Quarries/Ancillary Factories,
- Approximately **10,000** employed in Quarries



# Accident Trends









# Major Causes



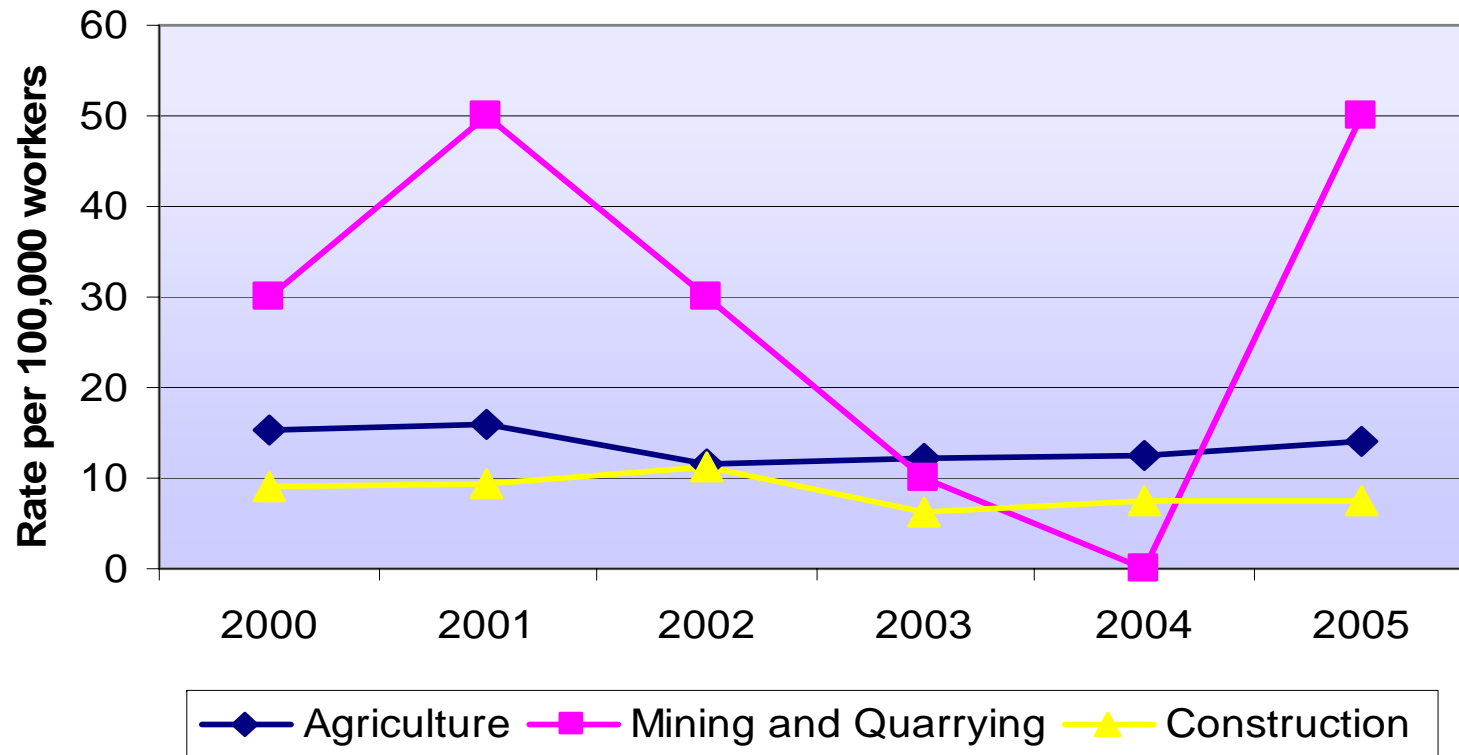
# Fatalities by Incident Type

(Data on last 6 years fatalities - 17)

Number fatalities	Incident type
	Quarry Face: Collapse
	Quarry Face: Fall from height
	Machinery
	Machinery – Manufacturing
	Transport
	Drowning

# Quarrying: Rate of Fatalities

**Fatality Rates**  
**Quarrying/Agriculture/Construction**  
(Quarrying = Working population of 12,000 approx)



# Average Fine (Approx. €€'s)

