



BEST PRACTICE

LOCATION:		ARTICLE YEAR:	2008
ACTIVITY:	Worker Involvement	COMPANY:	Hanson
SUB ACTIVITY:	N/A	COMPANY LOCATION:	Criggion Quarry, Shropshire
BEST PRACTICE No:	BP583	COMPANY TEL:	01938 570215

TITLE

 Award Winner  On Video

Mobile plant access survey

ARTICLE

A company-wide survey within Hanson Aggregates which encouraged operators and maintenance personnel to put forward and share ideas for reducing risks when getting into and out of mobile plant has resulted in major improvements in both equipment and attitude.

Across the company, over 550 hazards were identified on a total of 260 items of mobile plant. These were collated on a spreadsheet, from which common issues were identified. Management compiled a full report and put together some best practice alerts and a presentation showing detailed solutions.

Major concern has been expressed that 70 of these hazards highlighted design inadequacies relating to machines no more than 2 years old.

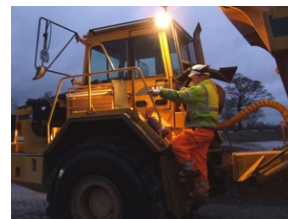
Modifications ranged from cheap fix ideas such as extending the autolube filler points down to ground level, to remotely operated lighting systems and purpose built maintenance platforms.

The exercise also provided useful information in identifying weak or poor performing equipment fitted to new plant. The results have been widely circulated within company and have brought about changes in attitudes by operators and fitters alike.

ARTICLE IMAGES



Before



After