

INCIDENT ALERT

LOCATION: Quarry
ACTIVITY: Transport
SUB ACTIVITY: Mobile Plant

ALERT STATUS: Normal
DATE ISSUED: 08/05/08
INCIDENT No: 00157

TITLE

FEL Collision with Parked Site Tour Mini Bus

ACCIDENT / INCIDENT DETAILS

A contractors FEL was parked in a mobile plant parking area when a site tour mini bus pulled up and parked in its normal drop off point. The mini bus was parked around 2m behind a stationary loading shovel. The school party had disembarked the bus & were clear of the incident heading towards the primary control room when the loader operator climbed back into his machine, he checked his rear visibility but did not do this effectively as he was concentrating on ensuring all site visitors were well clear of his machine. As the operator reversed and turned he came into contact with the Mini bus. The operator was fully inducted and trained, and all visual aids were available to him.

ACCIDENT / INCIDENT IMAGES



Damage sustained to tour bus

LEARNING POINTS / ACTIONS TAKEN

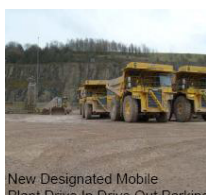
Action

LThe operator was disciplined for failing to ensure that he had competently used the all round visibility and visual aids provided on the plant.
LA review of site traffic management has now separated mobile plant parking away from small vehicles & remove the need to reverse mobile plant next to the primary control building.

Remedial Actions

LA joint traffic management review is to take place with the on site contractor.
LRA and SWP to be reviewed for the operation of site tour mini busses, to include safe parking exclusion zones.
LThe site tour Mini Bus is to be upgraded with double flashing beacons and hi visibility chevrons.

LEARNING POINTS / ACTIONS IMAGES



New designated mobile plant drive in drive out parking