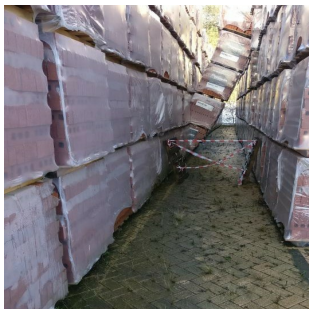


Product Storage

WHAT HAPPENED

A recent incident involving the storage of clay bricks has learning points which apply across most industry sectors. A stack of product recently became unstable and collapsed. Due to the close proximity of other stacks the load remained upright but became a significant hazard. An investigation identified that both ground conditions and rotten pallets were contributory factors.



LEARNING POINTS / ACTIONS TAKEN

• All storage of heavy building products poses a potential risk. • All product should be stored in accordance with a formal standard operating procedure or safe working practice. • All stored product should be regularly inspected. • Any unstable products or stacks must be appropriately controlled (cordoned off) until they can be safely addressed. (Editors note: See also HSE Guidance on Pallet Safety PM15: Stack height depends on the height, strength and stability of the unit loads, and the ability of the operator to see clearly. Only build taller stacks after detailed consultation with the manufacturer or other competent authority, and the maximum height should be no more than six times the narrowest dimension of the bottom pallet. This is provided that: • you have carefully assessed the block stacking pattern and the compression characteristics of the payload; • the pallet itself is designed to meet the stacking height required). .

LOCATION: CONCRETE PRODUCTS PLANT
ACTIVITY: MANUAL HANDLING AND STORAGE
SUB ACTIVITY: CONCRETE PRODUCTS

ALERT STATUS: Normal
DATE ISSUED: 30/05/2017 16:57:34
INCIDENT No: 01453