

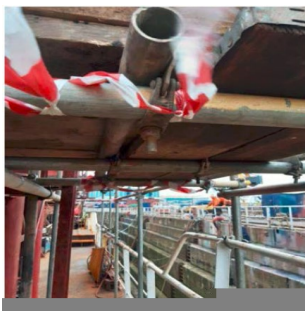
Tipper Tail Gate

WHAT HAPPENED

A contract haulier delivering aggregates to site suffered a neck injury while brushing off the back ledge of his tipper body.

The driver had put the lower tailgate up to clean the ledge and while carrying out the cleaning, the tailgate weighing Approx 50kg swung down, hitting him on the top of his safety helmet. Fortunately because he was wearing his safety helmet the driver did not suffer a very serious injury.

The investigation found that the tailgate latch had rested on the locating pin and had not fully secured, and the safety chain was not used.



Tail Gate



Tail Gate Close Up

LEARNING POINTS / ACTIONS TAKEN

Please ensure that when working at the rear of a tipper:

- The safe system of work is followed
- The tailgate is secure
- The safety chain is used
- The correct PPE is worn, especially head protection (on this occasion it probably saved his life)!
- and that the company's haulier rules are followed. "Tailgates must be fitted with a minimum Hex Nut tailgate operation; ideally an automatic gate is preferred. Articulated trailer gates which operate by either gravity or pressure are acceptable"

Due to the design of this particular trailer a hexagon nut could not be fitted.



Hard Hat

LOCATION:
ACTIVITY:
SUB ACTIVITY:

CONSTRUCTION/DELIVERY SITE
TRANSPORT & LOGISTICS / DELIVERY
PRODUCT DELIVERY

ALERT STATUS: Normal
DATE ISSUED: 27/03/2012
INCIDENT No: 00330