

## INCIDENT ALERT

<b>LOCATION:</b>	<b>AGGREGATE DREDGER</b>	<b>ALERT STATUS:</b>	<b>Normal</b>
<b>ACTIVITY:</b>	<b>SSOW</b>	<b>DATE ISSUED:</b>	<b>07/04/2021 11:01:07</b>
<b>SUB ACTIVITY:</b>	<b>NO SUB ACTIVITY AVAILABLE</b>	<b>INCIDENT No:</b>	<b>03590</b>

### TITLE

**Finger cut with grinder - BMAPA Alert**

### COUNTRY OF ORIGIN

### ACCIDENT / INCIDENT DETAILS

The injured party (IP) and one other crew member were undertaking the task of changing the flaps/wear plates on the loading chute of a UK marine aggregate dredger. Prior to undertaking the task, they had anticipated that some bolts would be seized and therefore would require grinding off. They raised a permit to work, including TRAs for the job and conducted a toolbox talk.

Approximately 10 minutes after starting the job the IP was cutting through a bolt and moved the grinder away to check on the progress of the work. In doing so the IP inadvertently removed his right hand from the grinder and caught his finger on the grinding disc while replacing his hand. The disc cut through his glove and caused a 2cm cut on the outside of his right index finger. Realising he had injured himself, the IP turned off the grinder, informed the other crew member of his injury and made his way to the bridge to seek first aid treatment.

The other crew member present made the work site safe by turning the grinder off at the power source and made his way to the bridge to provide assistance as required.

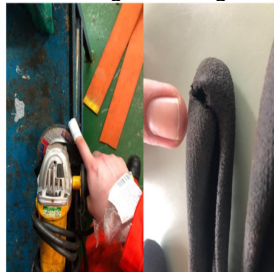
Whilst there was a Permit to Work and Risk Assessment in place, the injury occurred due to improper handling of the power tool, specifically removing a hand from the grinder whilst the disc was still turning.

The TRA for use of power tools specified "correct PPE" to be worn but did not specify the level of protection required. The glove PPE in use had an abrasion resistance rating of 3 out of 4 but a cut resistance rating of 1 out of 5. Using the available gloves with a higher cut resistance rating will likely not have prevented the injury from occurring but may reduce the seriousness of the injury sustained.

Access to the underside of the loading chute was obtained by working on top of a BAD (Ballast as Dredged) cargo. The vessel holds a TRA for this type of work, but it was not referenced on the PTW. This particular TRA is not likely to be contributory in this event, however, it should have been included on the PTW.

### ACCIDENT / INCIDENT IMAGES

Click image to enlarge



The finger was injured while re-gripping the handle – This picture illustrates how hazardous a moment's inattention can be and the importance of proper tool discipline.

Damage to the glove

### LEARNING POINTS / ACTIONS TAKEN

- All personnel are to be reminded of the importance of correct power tool discipline. It only takes a momentary lapse in concentration for an injury to occur;
- All ships to review TRAs involving a cut/abrasion risk to ensure that "correct PPE" is defined more clearly to provide the correct level of protection. This may reduce the seriousness of an injury should a similar incident occur in the future;
- All ships to review their TRA for working on top of a cargo and ensure that all relevant TRAs are listed on the PTW prior to the Authorising Officer providing the authority to commence work.

### LEARNING POINTS / ACTIONS IMAGES