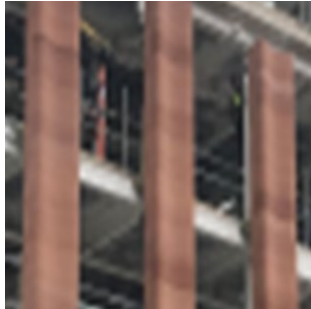


# Fatal 3 - Working at Height – Procedural Adherence

## WHAT HAPPENED

An operative was witnessed by client representative accessing works via the perimeter edge handrail at Level 4 as opposed to using the method set out within Project Task Plan.

Fellow operatives also working in vicinity failed to prevent unsafe actions. .



Operative by the third column on the right



Operative is on 4th level

## LEARNING POINTS / ACTIONS TAKEN

1. All operatives re-inducted by Principal Contractor
2. TBT given to all operatives relating to WAPE (Working at Perimeter Edge)
3. All operatives stood down and Safe Working Procedures re-briefed.
4. WAH checklist to be undertaken by site supervisor at location of works with sheet displayed in pouch attached to exclusion zone barrier or handrail at work face

---

LOCATION:	CONSTRUCTION/DELIVERY SITE
ACTIVITY:	BEHAVIOURAL SAFETY MANAGEMENT
SUB ACTIVITY:	NO SUB ACTIVITY AVAILABLE

ALERT STATUS:	Normal
DATE ISSUED:	13/06/2022 16:33:00
INCIDENT No:	03620