

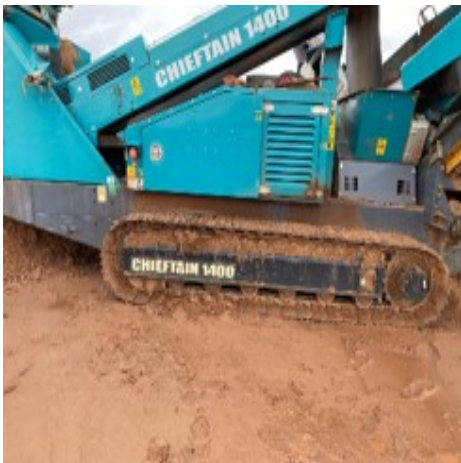
# Slip trip and fall - Operator slips and sustains ankle injury on conveyor walkway steps

## WHAT HAPPENED

The injured person (IP) was completing daily maintenance checks and walked down the side of an incline conveyor, at the bottom, there are a set of six steps. As the IP approached the steps their right foot slipped forward off the top step causing the IP to perform a splits action and land on their left leg.

### Key Factors:

- HIRA and stop assessment in place for the task
- The IP was wearing full PPE gloves glasses and laced up boots
- IP maintained three points of contact and was not rushing
- No spillage on or damage to the steps
- The top step has a depth of 160mm, the remaining 5 steps have a 210mm depth, as highlighted in the picture above.



## LEARNING POINTS / ACTIONS TAKEN

- All steps/stairs to be reviewed on site
- Replacement of top step to ensure equal depth and width descending.
- Handrail added to conveyor side of steps
- Fitting of anti-slip treads on the individual steps

---

LOCATION:	QUARRY	ALERT STATUS:	Normal
ACTIVITY:	MAINTENANCE & HOUSEKEEPING	DATE ISSUED:	30/07/2023 20:19:38
SUB ACTIVITY:	CONVEYORS	INCIDENT No:	03654