

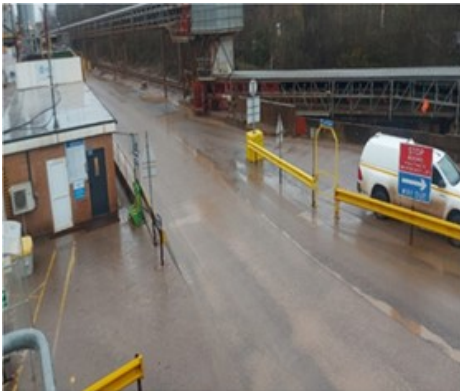
Slips, trips and falls –Individual sustains sprained wrist, cuts and grazes following a trip on pedestrian walkway

WHAT HAPPENED

The IP was walking across the designated pedestrian walkway to the vehicle 'pull up' point outside the weighbridge to conduct inspection and inductions. The IP tripped on a slightly raised section of asphalt and fell forwards, in doing so they tried to break their fall by putting their hands out resulting in a sprained wrist, cuts and grazes to their hand, knees, and head.

Key Factors:

- IP had not been inducted to site
- IP did not have a risk assessment for the task
- The raised level is historic and caused by an additional layer of asphalt added to the road



LEARNING POINTS / ACTIONS TAKEN

- Area to be levelled to remove the raised level
- Complete Hazard Identification Risk Assessment for task
- Review induction process on multi-unit sites
- Review pedestrian crossing to ensure direct crossing via additional designated gate

LOCATION:	QUARRY	ALERT STATUS:	Normal
ACTIVITY:	PEDESTRIAN SAFETY	DATE ISSUED:	30/07/2023 20:36:00
SUB ACTIVITY:	NO SUB ACTIVITY AVAILABLE	INCIDENT No:	03655