

# Fatal 3 - Scaffolder falls through skylight suffering serious injuries

## WHAT HAPPENED

The HSE have reported a case outside the minerals industry where a 26-year-old scaffolder was installing temporary scaffolding edge protection to a roof when he fell through a skylight, suffering a broken arm, leg and head injury. The incident, which was captured on CCTV, highlights the significant risks associated with work at height and inadequate control measures.

CCTV footage captures the harrowing moment when the worker falls through roof – HSE Media Centre. The footage may disturb some viewers, discretion is advised,

Follow this link [to view](#) video of the incident.

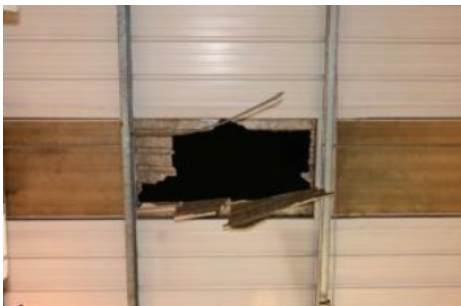
### KEY FINDINGS

Key HSE findings include:

- Failure to adequately plan and control work at height.
- Insufficient risk assessment and method statements (RAMS) for the activity.
- Workers were exposed to fragile roof surfaces without suitable protection.
- Lack of appropriate control measures to prevent falls through or from the roof.

Falls from height remain the single biggest cause of workplace fatalities in Great Britain, accounting for over a quarter of all fatal injuries.

Image below shows broken skylight



## LEARNING POINTS / ACTIONS TAKEN

## HOW COULD THIS HAVE BEEN AVOIDED?

Proper planning and risk assessment of the work at height activity.

- Application of the work at height hierarchy of control, prioritising collective protection.
- Identification and control of fragile surfaces using suitable platforms or coverings.
- Clear, task-specific RAMS, understood by all involved.
- Use of a Permit to Work system for work at height.
- Effective training, supervision, and competence on site.

## KEY REVIEW POINTS:

- Are work at height tasks properly planned and risk assessed?
- Are RAMS clear and understood by everyone involved in the work?
- Is the hierarchy of control applied, with suitable protection in place?
- Are fragile surfaces identified and controlled?
- Is a Permit to Work in use for Work at Height and followed?
- Are supervisors checking controls are actually being implemented?

**For more details, refer to the HSE Press Release.**

Contains public sector information published by the Health and Safety Executive and licensed under:  
<https://www.nationalarchives.gov.uk/doc/open-government-licence/version/3/>

---

<b>LOCATION:</b>	<b>DEPOT</b>	<b>ALERT STATUS:</b>	<b>Normal</b>
<b>ACTIVITY:</b>	<b>WORKING AT HEIGHT</b>	<b>DATE ISSUED:</b>	<b>06/07/2026 18:36:33</b>
<b>SUB ACTIVITY:</b>	<b>SSOW</b>	<b>INCIDENT No:</b>	<b>04981</b>