

## BEST PRACTICE

LOCATION:	Asphalt/Coating plant	ARTICLE YEAR	2019
ACTIVITY:	Access & Egress & Working at Height	COMPANY:	Midland Quarry Products
SUB ACTIVITY:	N/A	COMPANY LOCATION:	Ettingshall Asphalt
BEST PRACTICE No:	BP2076	COMPANY TEL:	0000
COUNTRY OF ORIGIN:			

### TITLE

Confined space entry elimination batch heater drum

### ARTICLE

#### DESCRIPTION

A redesign of the batch heater drum at MQP's Ettingshall Asphalt Plant has been implemented to make the access and egress to the inside of the drum safer when essential fabrication or maintenance work was required.

Access to the batch heater drum had previously only been possible via the drum spigot plate and was therefore classified as a confined space. To eliminate this hazard, the front plate of the batch heater drum was redesigned so the complete front plate could be lifted, pivoted and safely secured to allow "walk in access" to the drum. This modification eliminated the confined space classification.

#### BENEFITS

- More efficient maintenance
- Reduced downtime
- Reduced hazards associated with access and egress
- Eliminated confined space working
- Any emergency rescue from drum will be significantly easier

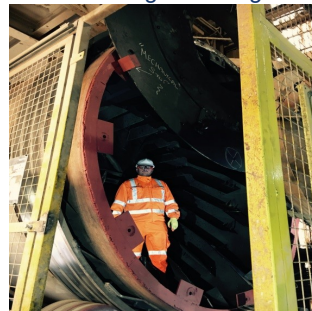
### ARTICLE IMAGES

Click image to enlarge



Before - shows access

Click image to enlarge



After