

BEST PRACTICE

LOCATION:
ACTIVITY:
SUB ACTIVITY:
BEST PRACTICE No:
COUNTRY OF ORIGIN:

Lime & Slag plants
Loading and unloading
No Sub Activity Available
BP2267

ARTICLE YEAR
COMPANY:
COMPANY LOCATION:
COMPANY TEL:

2026
Lhoist UK
Hindlow
0000

TITLE

Topic 4 - Fatal 2 - Improved safety of hydrated lime big bags storage shed

ARTICLE

DESCRIPTION

Lhoist UK sells a significant quantity of hydrated lime in bags that are loaded into containers and exported. The activity is centred on a facility known as the 'Bagging Shed'. In parallel to big bags, small 25 kg bags are also packed and stored there.

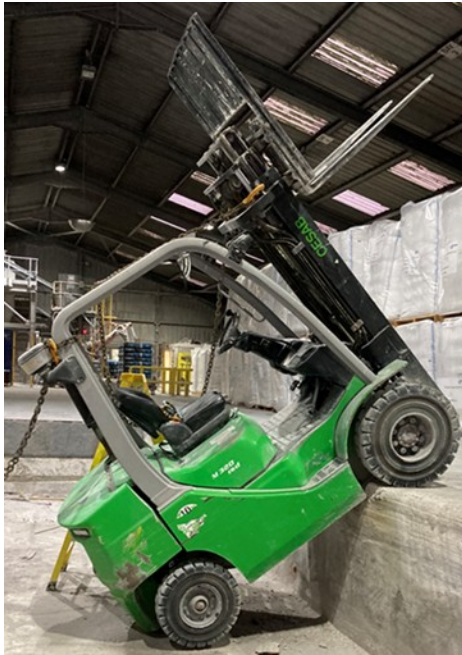
Historically, the trucks had to reverse into a pit within the storage area, where 25 kg bags could be loaded side-on to curtain sided trucks and at the rear of the shed into containers via a ramp.

The presence of the pit allowed practical loading for all types of trucks but constrained the space in the bagging shed. This necessitated the 'double stacking' of the big bags which contained over 1 tonne of hydrated lime, are 2m tall and full of loose powder which can cause them to be unstable.

The double stacking of the big bags presented a risk of bags falling over and the presence of the pit made driving of forklift trucks (FLT's) in the area challenging. In addition, the activity of reversing into a narrow pit was awkward for hauliers. Lhoist experienced near misses with big bags falling over and a potentially serious incident when a FLT reversed and fell into the open pit.

Lhoist recognised that a solution was required to mitigate these hazards and risks. However, the company did not want to adversely affect its service level to customers through a drastic reduction in the stock holding of packed material.

Please watch the video and review the entry in the 'Sharing good practice guide' for more information about Lhoist's solution to these issues.



BENEFITS

- Eliminated the risk of large falling bags.
- Increased storage area for bags.
- Easier and safer movement of FLT's within the bagging shed.
- Eliminated risk of FLT's falling into pit.
- Eliminated the challenge of drivers reversing into a narrow channel for loading.
- Improved traffic management around bagging shed.
- Easier and more efficient loading of vehicles.
- Positive feedback from staff and contractors.
- Reflects values of Vision Zero in action.
- A safer environment for all.

ARTICLE IMAGES