

## BEST PRACTICE

LOCATION:	Quarry	ARTICLE YEAR	2013
ACTIVITY:	Maintenance & Housekeeping	COMPANY:	Midland Quarry Products
SUB ACTIVITY:	N/A	COMPANY LOCATION:	Cliffe Hill Quarry
BEST PRACTICE No:	BP864	COMPANY TEL:	07968 544064
COUNTRY OF ORIGIN:	United Kingdom		

### TITLE

**Safe removal of shovel tooth from stalled primary gyratory crusher**

### ARTICLE

#### DESCRIPTION

A recent fatality to a worker whilst removing tramped metal from a crusher highlights the risks of this operation. The sudden, uncontrolled release of energy can send a lethal projectile amongst men working on the task.

MPQ fabricated a purpose built, crescent shaped, steel plate to manage this risk when removing a bucket tooth trapped in the primary gyratory crusher at Cliffe Hill Quarry. Once all other materials had been removed the crusher, a jib crane lowered the purpose built plate into position over the trapped tooth. The lifting chains were left in place and to add more weight, the crane "block" was lowered onto the plate and a "Pecker" blade was also placed on it. A two man team, both wearing a safety harness, were positioned in the in the tipper box which had been previously cleared of all material. They used a thermal lance inserted between slots in the steel plate to dislodge the tooth.

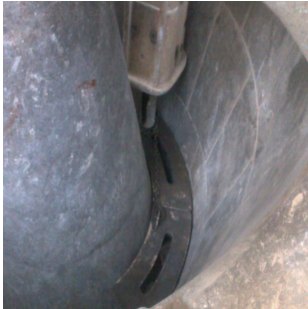
Please see additional pdf for summary of the actions followed by MQP.

#### BENEFIT

- A safe and secure work environment to carry out this dangerous task
- Involvement both contractors and employees in the decision making process

### ARTICLE IMAGES

[Click image to enlarge](#)



[Click image to enlarge](#)

