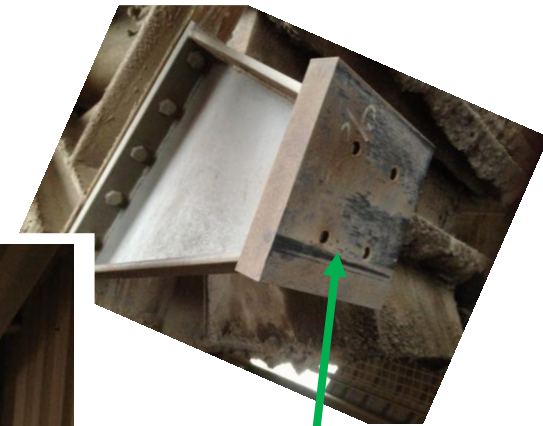


The Crumple Zone energy impact beam is attached to main structure to absorb the high energy impact without structurally weakening the integrity of the plant

**Bitumen tanks are located behind this Asphalt Plant sheeting**

2 off the 4 calculated structural beam supports dissipate energy on impact

View from midway up the incline skip track looking back towards the high impact beam at the bottom of the skip track



Specially designed pads that are attached separately to the skip also absorb the high energy impact