

Health & Safety Awards



Entry Form

Open to all: MPA members;
non-MPA*companies

* Trophies restricted to MPA members UNLESS,
entry submitted jointly with an MPA Member

Maximum 15 entries per Company

Entry Reference No:		<i>For MPA Office use only. You will be advised of your unique Entry Number, to be quoted in any correspondence</i>
---------------------	--	---

Instructions	<p>MPA prefers your entry to be submitted online via www.Safequarry.com.</p> <p>Alternatively, complete this form and attach the form and your photos to an email and send to: hsawards@mineralproducts.org.</p> <p>BEFORE entering, search www.Safequarry.com for previous similar entries. Your entry needs to be a new idea or a significant improvement of an existing idea.</p>
---------------------	--

Topic (Brief guidance on Page 5) Tick or mark 'X' in ONE box only Your company can submit a maximum of 15 entries	Occupational Good Health	<input type="checkbox"/>	
	LGVs/HGVs and all other company vehicles; Driver Safety/Public Safety	<input type="checkbox"/>	
	Contractors Safety	<input type="checkbox"/>	
	Worker Involvement	<input type="checkbox"/>	
	Bitumen; Asphalt; Contract Surfacing:- Promoting Safer Behaviour	<input type="checkbox"/>	
	You may enter here only IF your subject fits none of the above	Engineering Initiatives	<input checked="" type="checkbox"/>
		Leadership; Training; Management Systems Initiatives	<input type="checkbox"/>

Company Name	Singleton Birch Limited
Unit Name (where entry is)	Melton Ross Quarries
Address for correspondence (including post code)	Barnetby North Lincolnshire DN38 6AE
Person To Be Contacted Name	Kye Brown
Email	kb@singletonbirch.co.uk
Telephone Number	01652 686000

Recognition of Individuals (Optional) Employees, hauliers, contractors, who have "gone the extra mile" to make this industry even safer and healthier. Person(s) MUST be connected with entry.	Name & Job Title
	Brief Summary of REASONS for nomination

Entry Deadline	Thursday 17 May 2012
----------------	----------------------

Title of your Entry	Maerz Kilns - Discharge Table Cylinder Modifications
---------------------	--

Brief description

Singleton Birch Limited currently operates four Maerz Parallel Flow Regenerative Lime Kilns which produce 300 tonnes/day of Calcium Oxide (CaO).

No.3 Maerz Kiln was taken out of production in January 2012 for major refurbishment. The work included a new refractory lining and electro/mechanical maintenance.

From the outset of the project, a key objective was to look at all areas on the kiln, with regard to health and safety improvements. The discharge table hydraulic cylinders maintenance was one such area that needed improving.

The CaO is discharged using a mechanism of shuffle feeders (known as the discharge tables) which are powered by hydraulic cylinders.

This system is continually discharging CaO; 24 hours a day 365 days a year; therefore the hydraulically powered system is one that has to be relied upon for its continual operation.

Unfortunately though, if the hydraulic cylinder does require maintenance, then this would involve confined space working¹; due to the fact that to disconnect the cylinder requires entry into the discharge tables casing (see photograph 2).

The hydraulics system was reviewed and through a management of change process; a new design concept was developed; whereby the hydraulic cylinder connection to the discharge table was moved externally (see photographs 4 & 5).

The actual cost for the installation was £1800 per unit; which in health and safety terms cost v risk was minimal compared to the potential risk of injury from working in confined spaces.

Commissioning of the system was completed successfully and the proposal is to modify all of the other three kilns as they come off line for refurbishment.

Legal & Other Requirements:

¹**Confined Space Regulations 1997:** Regulation 4(1) *No person at work shall enter a confined space to carry out work for any purpose unless it is not reasonably practicable to achieve that purpose without entry.*

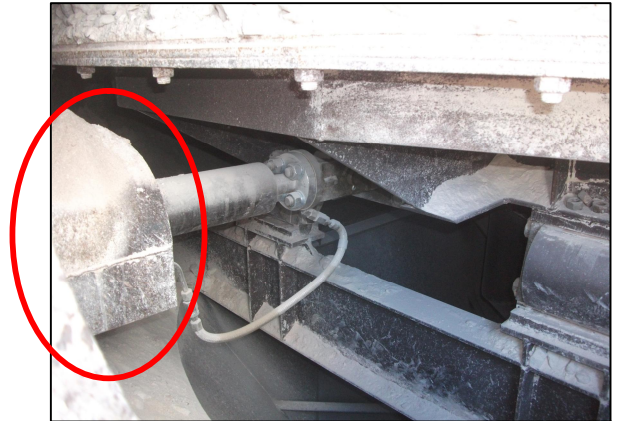
Benefits following introduction	<ul style="list-style-type: none"> • Legal compliance with regulation 4(1) - no confined space entry work is required; work can now be carried out externally. • Morale of personnel tasked with the work improved, through the benefit of the safety improvement • Easier for any fault finding; i.e. one person can now view and test the actual mechanism, whereas before it would have required two, one inside that confined space and one outside.
---------------------------------	---

Photographs with captions ('before' and 'after' photographs, if possible) Place photographs below for illustration purposes. Attach **high quality** photographs to email accompanying this entry or better still apply online via www.Safequarry.com



Photograph 1

Showing CaO on discharge table; access to hydraulic cylinder connection would mean personnel entering confined space through this manhole



Photograph 2 (before)

Underneath the shroud (circled) is the hydraulic cylinder connection. To disconnect required confined space entry into discharge tables casing



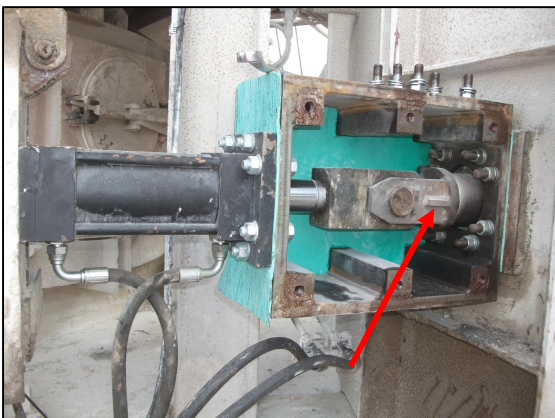
Photograph 3 (before)

Showing hydraulic cylinders bolted directly to the discharge table casing pre-modification



Photograph 4 (after)

Showing design modification whereby the hydraulic cylinders are not bolted directly to the discharge table casing, instead a box section extension has been fitted



Photograph 5 (after)

Hydraulic cylinder connection, section arrowed has also been extended to allow the hydraulic cylinder to be disconnected without any confined space entry



Photograph 6 (after)

The locking pin being pointed out is removed, after which the cylinder can be unbolting and removed without any confined space entry



What happens next?

- Entries will be acknowledged; you will be advised of your unique **Entry Reference Number** which you will need to quote if contacting the MPA, or when making visit arrangements
- Your entry may be switched to another category at the Judges’ ultimate discretion
- Your entry will be read by the appropriate MPA Assessors and Judges who will produce shortlists. The importance of clear description, supported by GOOD QUALITY photographs, is emphasised.
- Judges will visit or telephone shortlisted entrants, *where deemed necessary*.
- Judges’ decisions are final.

Scheme Rules and Guidance Notes - *The 2012 Scheme is open to all*

The Mineral Products Association’s annual Awards Scheme is open to all with an interest in health & safety. MPA welcomes entries from every organization in the supply chain. **If you are a non-Member and wish your initiative or good idea to be considered for a Trophy, YOU NEED TO ENTER JOINTLY WITH AN MPA MEMBER.**

To take advantage of this opportunity via the ONLINE facility, you need to REGISTER on www.Safequarry.com - this will take 90 seconds of your time!

Log into www.Safequarry.com
And click this gold button



. **Strict Deadline: 17 May 2012**

<p>Points to consider include:</p> <p>If your Entry is selected for a Judging Visit, the Judge will want to “walk the talk” and discuss your Entry with Operatives, as well as Managers.</p>	1. Indicators of commitment by your company
	2. Description of efforts to influence behavioural aspects
	3. Give credit to whoever came up with the good ideas
	4. Effectiveness of control measures (engineering/management)
	5. Method(s) and effectiveness of monitoring system
	6. Problem areas: identification and priorities for action
	7. State actual levels of recorded improvement, if possible
	8. Evidence that existing good practice has been taken on board
	9. Evidence that specific legislation/guidance is understood
	10. Evidence that all relevant workers taken into account
	11. Briefly explain how you communicated the benefits to others
	12. Involvement and genuine workforce support (incl. Trades Unions, where applicable)
	13. Refer to Safequarry.com
	14. Is your good idea/innovation in regular/routine usage?

One of these Scheme trophies could be yours for a year . . .

