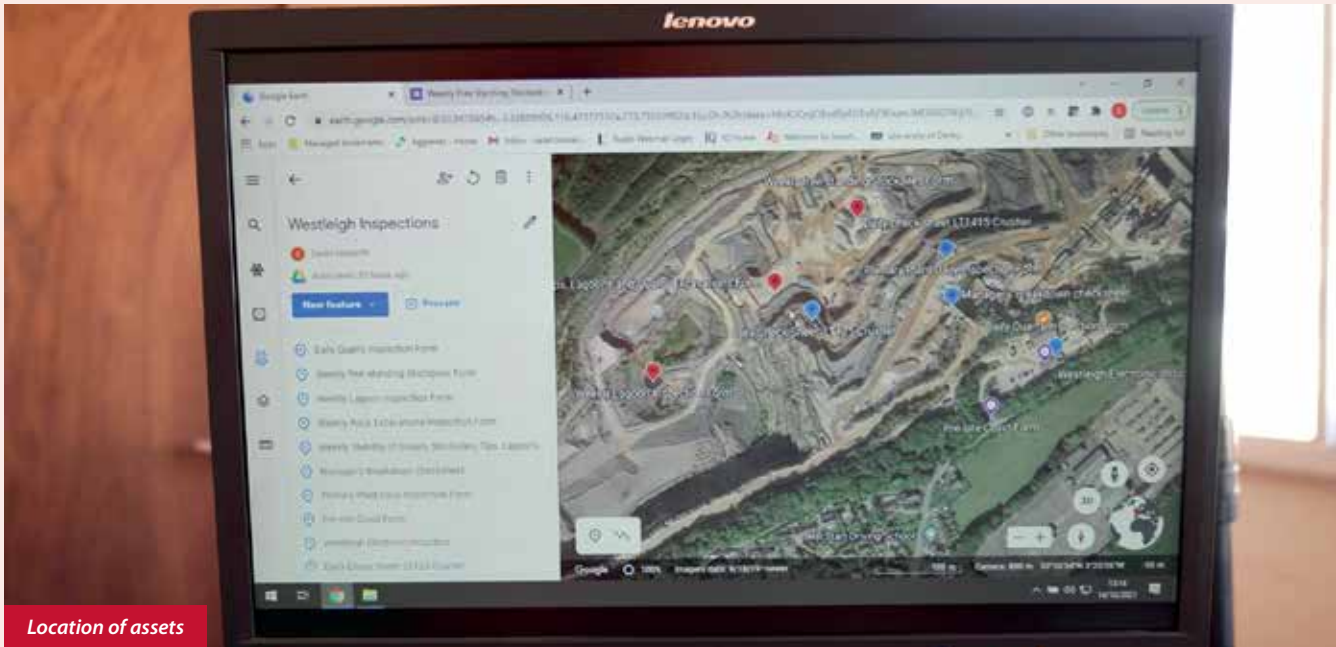




# 21045 Structural asset geo-location and logging project

Aggregate Industries > Westleigh Quarry



Location of assets

## DESCRIPTION

Following a pattern of incidents and near misses linked to structural assets being missed from safety surveys both internally or by contractors, it was recognised that a robust system needed to be implemented to improve site safety for employees and visitors.

Using the freely available Google Earth interface with satellite overlays a new system was created. Each asset on a site was geo-tagged with a pin detailing the asset name and further information such as, a description of how to access the asset, photographs of the asset, and in some cases, inspection forms (using google forms) and risk assessments.

The system generated reports detailing when assets were due to be reviewed and all relevant information relating to the asset could be viewed such as the last review, details of actions taken or required.

After piloting the system at Westleigh Quarry, the concept was presented to an area management meeting. The managers from other sites were keen to roll this out on their sites.

This has become a well-used and key planning tool across the AI region for both this structural asset project and as a central indexing tool for a range of different uses. This project has made working conditions safer by minimising the chances of unsafe working conditions on sites and therefore reducing the chances of incidents and near misses.

## BENEFITS

- No incidents or near misses linked to the site's structural assets since implementation

- Significantly reduced possibility of any assets not being reviewed
- Reduced risk of unsafe conditions on-site
- Provides visual display of all assets on-site
- Easy to update when assets are added, removed or moved
- Information easy to share with employees, contractors and managers both on or off-site
- Accessible on wide range of platforms e.g tablets, laptops and phones
- Can be used in video conferences
- Useful tool for briefing, inductions and training
- Photographs aid asset identification
- More efficient management of site
- Good data security.

## TRANSFERABILITY AND DEVELOPMENT

- The system is well used and a key planning tool across Aggregate Industries Western region both for structural asset management and as a central indexing tool for a range of different uses.
- This is highly adaptable, it can be used on a range of different sites and locations.