



Health & Safety
Executive

The Hard Target and Target Zero

Helen Turner, Health and
Safety Executive, Great
Britain



Health & Safety
Commission

02/11/2005



HSE

Health & Safety
Executive

UK Government initiative – “Revitalising Health and Safety”

- Reduce days lost through accident and ill health at work by 30%
- Reduce the incidence of people suffering from work-related ill health by 20%
- Reduce the rate of fatal and major injuries by 10%



HSC

Health & Safety
Commission

02/11/2005



HSE

Health & Safety
Executive

New quarry regulations 1st January 2000

Concentrate on:-

- Design
- Competence
- Management
- Workforce participation



HSC

Health & Safety
Commission

02/11/2005

Quarries National Joint Advisory Committee

- Purpose: to influence the improvement of health and safety in quarries
- Made up of
 - Union representatives
 - Employer representatives
 - Associations
 - Professional bodies
 - Education and training bodies
 - HSE representatives



HSE

Health & Safety
Executive



HSC

Health & Safety
Commission

02/11/2005



The quarry industry target 2000-2005:

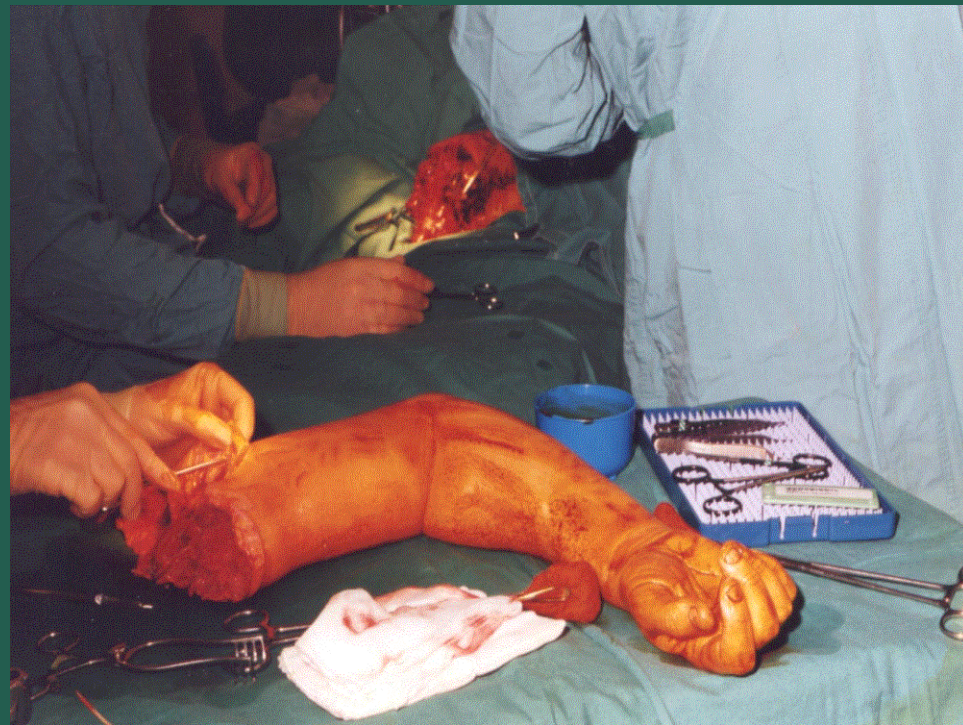
THE HARD TARGET



CUTTING ACCIDENTS AND ILL HEALTH

02/11/2005

Quarry Industry Target – to cut accidents by 50% in 5 years





Baseline

- RIDDOR reportable and reported accidents at quarries
- Averaged accident numbers 1995-1999





HARD TARGET

The Balanced Strategy, 2000/01 -





HSE

Health & Safety
Executive

A partnership between employers, employees, professional bodies, training organizations and HSE

“We are committed to a process of continually improving the health and safety performance of the quarry industry and will play our part in achieving the national ‘hard target’ of halving accidents in the quarry industry by 2005”



HSC

Health & Safety
Commission

02/11/2005

Improving competence



EPIC

- National vocational qualifications
- Membership of professional institutions
- Health and safety audit training package for small and medium businesses
- Continuing professional development



HSE
Health & Safety
Executive



HSC
Health & Safety
Commission

02/11/2005

16



HSE

Health & Safety
Executive

Health and safety curriculum and course notes for Universities and Colleges



HSC

Health & Safety
Commission

02/11/2005



HSE

Health & Safety
Executive

Subsidized courses for all worker representatives in health and safety



HSC

Health & Safety
Commission

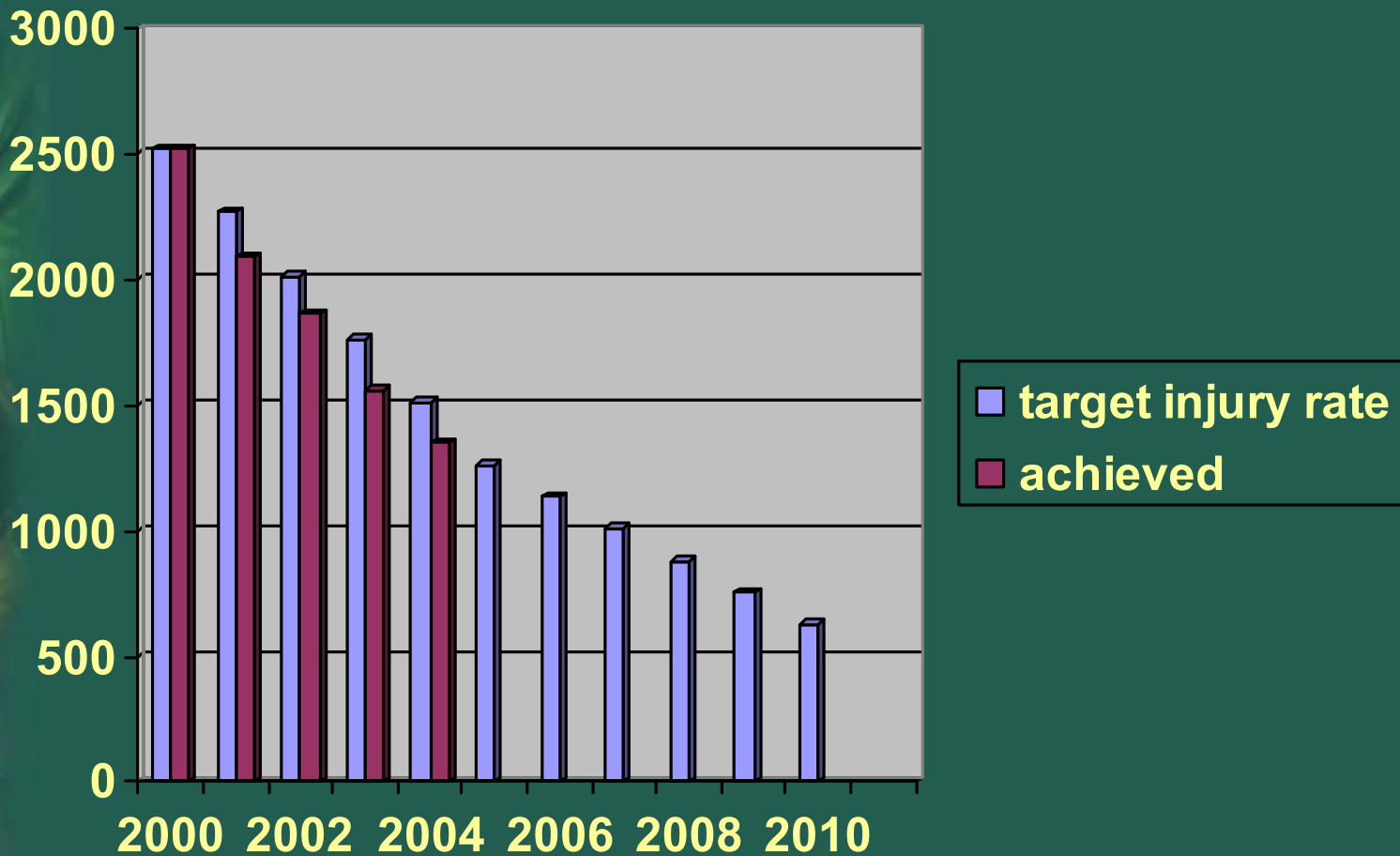
02/11/2005



HSE

Health & Safety
Executive

Achievement



HSC

Health & Safety
Commission

02/11/2005



HSE

Health & Safety
Executive



HSC

Health & Safety
Commission

The quarry industry
target 2006-2010:

**TARGET ZERO - A
WORLD CLASS
INDUSTRY**

02/11/2005



The target

- Further 50% reduction in accidents from the 2000 baseline



02/11/2005



Key indicators

- Competence
- Workforce participation
- Contractors
- Hauliers
- Occupational ill health
- Rehabilitation



HSE

Health & Safety
Executive

Competence

- Fully competence assured industry by 2010
- Structured, integrated training scheme
- National engagement with curriculum
- Local engagement with schools
- Industry using to the full its HE and FE institutions
- Stakeholder partnership scheme

HSC

Health & Safety
Commission

02/11/2005



HSE

Health & Safety
Executive

Workforce participation

- Safety representative (+/-committee) for every quarry by 2010
- All safety reps trained at least to the standard of the QNJAC course
- Effective consultation arrangements in line with QNJAC “declaration”



HSC

Health & Safety
Commission

02/11/2005



HSE

Health & Safety
Executive

Contractors

- All contractors under passport training scheme by 2010
- Competence - No double standards
- Effective co-operation and co-ordination between different employers on site



HSC

Health & Safety
Commission

02/11/2005



HSE

Health & Safety
Executive

Hauliers

- Quarry design addresses needs of hauliers and safe loading etc
- All drivers to be trained to standard of EPIC training package
- Competence - No double standards
- CCTV and automatic sheeting systems
- Effective co-operation and co-ordination between different employers on site



HSC

Health & Safety
Commission

02/11/2005



HSE

Health & Safety
Executive

Occupational ill-health (1)

- Management of health risks to the standard set out in QNJAC guidance
- Interim surrogate target
- Ultimately a numerical health target



HSC

Health & Safety
Commission

02/11/2005



Occupational ill health (2)

“Providing workplaces with the lowest possible levels of foreseeable occupational health risk”





Occupational ill health (3)

- To this end, all employees will participate in:
 - An occupational health management programme
 - Risk based occupational health surveillance
 - Appropriate occupational hygiene monitoring



Rehabilitation

- Managing sickness absence
- Rehabilitation schemes in accordance with the QNJAC and HSE guidance fully implemented by 2010





HSE

Health & Safety
Executive

Launch of Target Zero

- High profile event November 2005 for all QNJAC members and their CEOs, HSC ...
- Celebration of achievement of the Hard Target
- Public commitment to Target Zero



HSC

Health & Safety
Commission

02/11/2005



HSE

Health & Safety
Executive



HSC

Health & Safety
Commission

02/11/2005

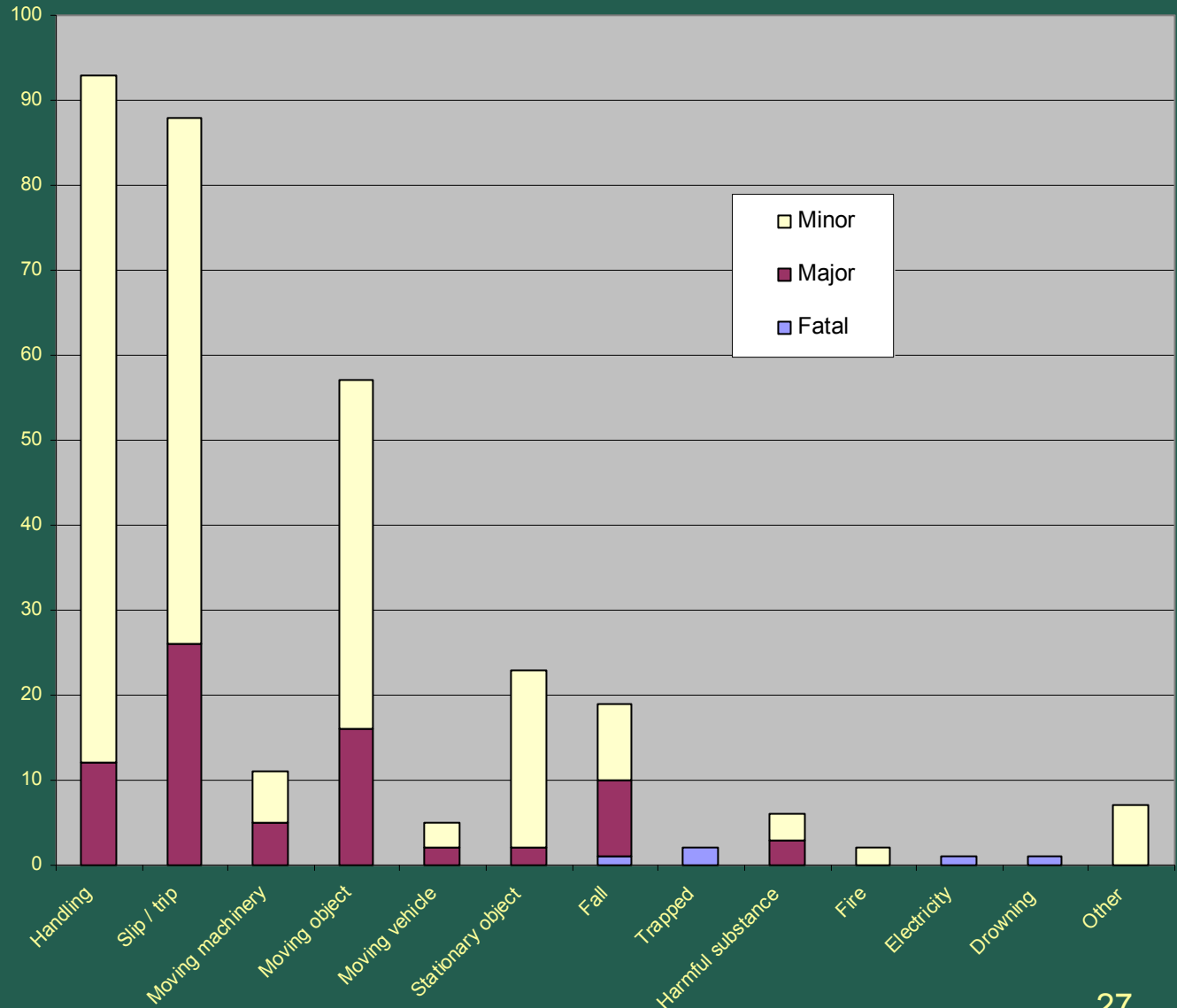
NATIONAL JOINT ADVISORY COMMITTEE QUARRIES



HARD TARGET INITIATIVE

CUTTING ACCIDENTS AND ILL HEALTH

Accident types 2003-4



HSE

Health & Safety
Executive



HSC

Health & Safety
Commission

02/11/2005



Perceptions of hazardous nature of comparative industries

