

Solutions for a safer design and improved operator comfort on earth moving machines

- Content: + cabin access
+ visibility
+ brake control
+ daily maintenance
+ vibration

Price!

Customer Value!

Profitability!



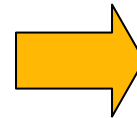
Standards



Options

Solutions for a safer design and improved operator comfort on earth moving machines

Content: + cabin access
+ visibility
+ brake control
+ daily maintenance
+ vibration



*Performance
Availability*



Standards



Options

1962: innovative technical solutions, no focus on operator comfort

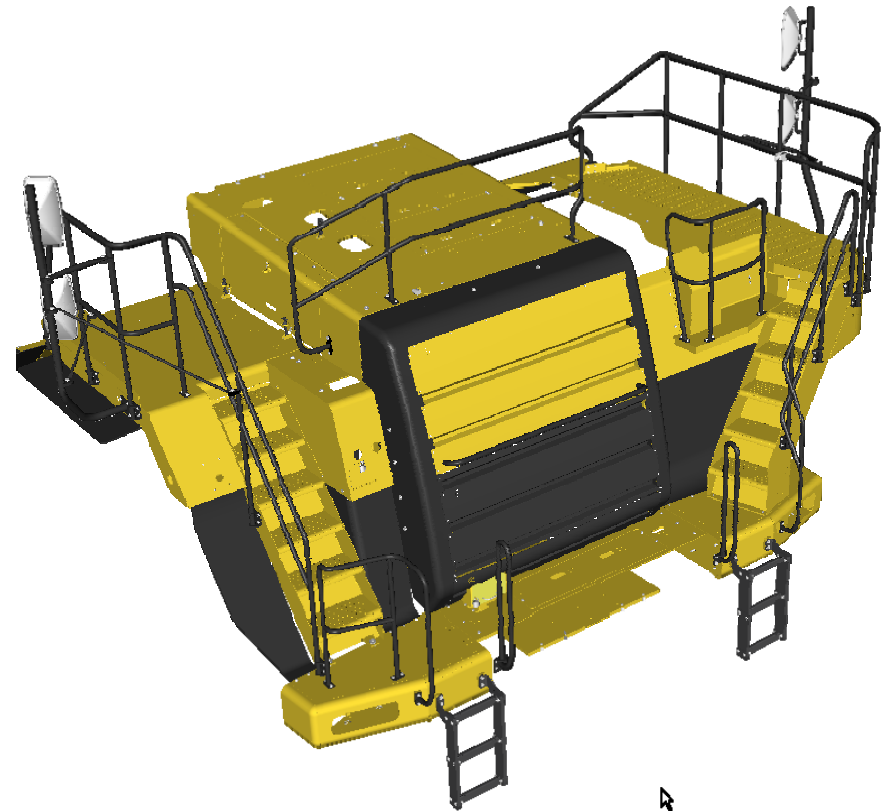




easy and safe access and improved visibility

Safe Operation

- Stairway and platform access
- Lighted stairway and wider railed cab access area
- Skid-resistant surface on all stairs and walkways
- Toe boards help prevent falling objects off the platform





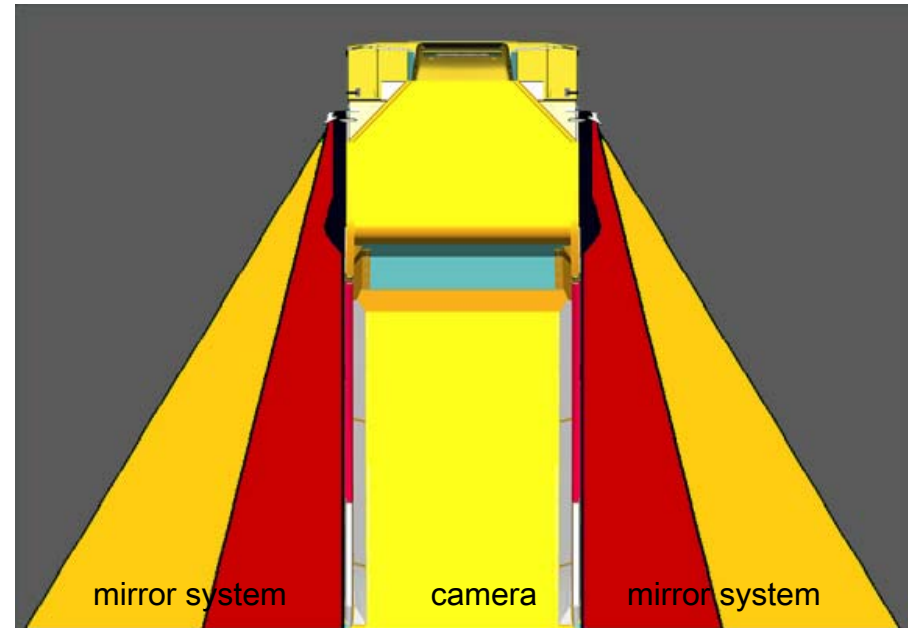
Safe Operation

Improved Visibility



improved rear view
visibility

- + *heated mirrors*
- + *rear vision camera*

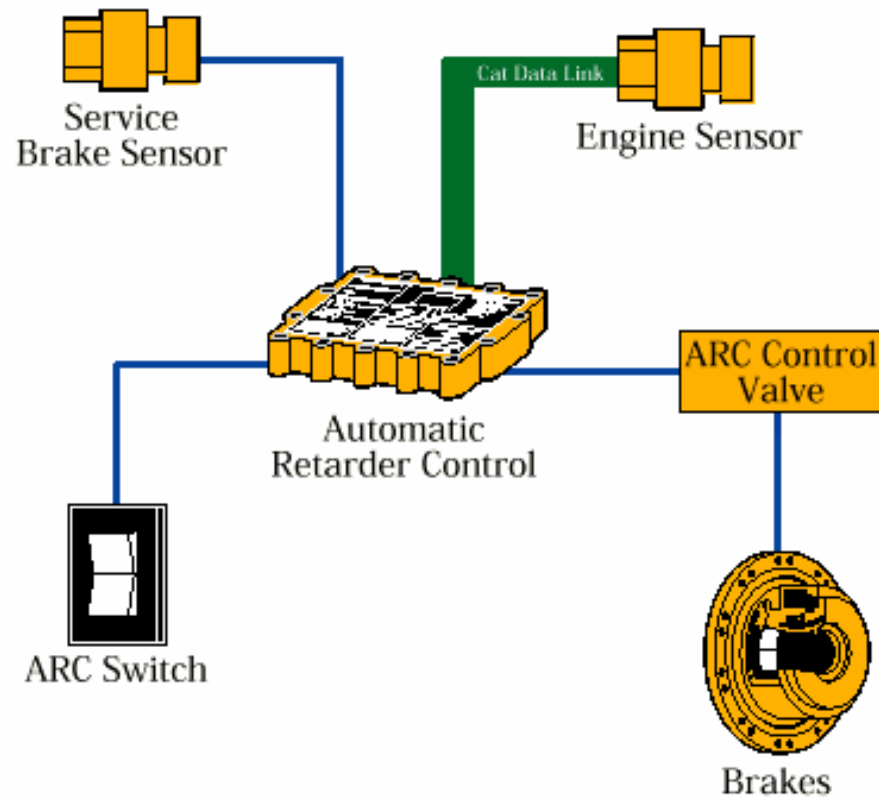


Comfortable, Roomy Cab

- Seat moved to center of cab
 - + more room for the operator
 - + easier entry and exit
 - + three point safety belt
 - + less vibration



automatic retarder control, standard



customer value:

- + easier for the operator
- + max. brake performance and speed
- + lower risk for brake overheating
- + improved reliability
- + improved durability
- + less costs for road maintenance

- + less costs per tonne

„Safety Truck“

- access + easy stairway- and platform access
- visibility + heated mirrors and rear view camera
- control + automatic retarder control system
- + three point safety belt



Machine Access/Visibility/Quarry Package/Option

- Safety markings
- Rearview (camera)
- Cab Access and safety belt signal
- Front access platform
- ground level access for daily maintenance
- vibration control





- **heated mirrors**
- **Rearview vision (camera)**



- + easy access with hydraulic activated ladder by park brake switch
- + beacon on cab activated by the safety belt lock



Inclined ladder actuated by parking brake with 15° slope for unmatched cab access and egress





**Access platforms to
clean the windows**



Daily maintenance with groundlevel access Standard

Right Hand Service-Modul



Left Hand Service-Modul



Standard

Vibration Control Systems on Cat H-Serie Wheel Loaders

- hydraulic controlled steering stops
- cab support on rubber dampers
- hydraulic damping system in lift cylinder
- programmable bucket positioner with soft stops
- armrest mounted on the seat
- new steering system, full turn within 140 degree steering angle
- integrated brake control with automatic transmission downshifts
- operator can use variable shift points to get soft shifts



Summary

**A safe machine world will create
a better machine availability
and finally less cost per ton for our
customers!**

**Thank you very much
for your attention!**

